



PRINTABLE!
PERSPECTUS!



ABOUT ASHEVILLE BOOKWORKS

Asheville BookWorks is a community resource for print and book arts located in West Asheville, North Carolina. Through classes, exhibits, lectures, artist residencies and annual events like BookOpolis, Asheville BookWorks has become a gathering place for those with an interest in bookbinding, papermaking, printmaking, and letterpress. Asheville BookWorks provides studio space, equipment and technical support for artistic exploration, collaboration and the sharing of knowledge.

ABOUT BOOKOPOLIS

BookOpolis, in its seventh year, showcases the work of contemporary book artists and printmakers. BookOpolis is a weekend event displayed within the walls of a large studio setting. The weekend opens with a grand reception and unveiling of the work on Friday evening. With permission of the artist, work may be handled with care, under the supervision of BookWorks staff and volunteers. On Saturday BookOpolis remains on view with a studio open house to celebrate and demonstrate the unique tools of the trade; papermaking, letterpress printing, book binding, meeting with artists and guided projects for visitors. After BookOpolis weekend, a selection of work juried from the full submission of artists' books and prints will remain on display in the BookWorks Gallery through November 28, 2011.

CAPITAL WORKS SHOW

All work submitted for BookOpolis will be considered for the Capital Works Show. Artists whose work is selected will be notified the week of September 5. Work in this show will be returned the week of November 28 – December 2, 2011. If a catalog is produced, all works in the Capital Works Show will be featured, using professional quality images and descriptive statements provided by the artist.

EILEEN WALLACE JUROR

Eileen Wallace is a letterpress printer and book artist specializing in custom printing and bookbinding. In addition to maintaining a private studio, she teaches workshops across the country and is currently Visiting Assistant Professor in Printmaking and Book Arts at the University of Georgia. She is on the board of directors of Hand Papermaking magazine and has been a co-director of the Paper and Book Intensive since 1995. She recently curated the book *Masters: Book Arts*, available soon from Lark Books. Her permanent home is Chillicothe, Ohio, where she assists in maintaining the archives and studio of renowned papermaking scholar Dard Hunter and recently co-curated "The Artist's Hand: Dard Hunter and the American Arts and Crafts Movement", an exhibition held at the Decorative Arts Center of Ohio in Lancaster. Wallace holds a MFA in Book Arts from the University of Alabama and is a former Resident Artist at Penland School of Crafts.

AWARDS

Eileen Wallace will select a Purchase Award from the entries chosen for the Capital Works Show. The Purchase Award will become part of Asheville BookWorks Special Collections Library.

ELIGIBILITY

BookOpolis is open to all print and book arts media completed within the past two years. Whatever your subject matter is, BookOpolis seeks work that exemplifies a compelling integration of concept, craft and design. All entries will be displayed during the BookOpolis weekend, at the discretion of the BookWorks staff.

SIZE LIMITATIONS

Space is limited, BookWorks reserves the right to not fully display works greater than 24" in any direction. Please inquire before shipping work if you have specific space requirements.

ENTRY REQUIREMENTS

Artists may submit up to two (2) entries completed within the past two years. Each entry consists of: The Actual Work, accompanied by:

- A separate Entry Form, downloadable from the Asheville BookWorks website, <http://www.ashevillebookworks.com/bookopolis/> and a separate Entry Fee, non-refundable, \$15 payable per entry payable to Asheville BookWorks.
- A CD. Each entry must be represented by up to two digital images on a CD labeled with your name. Images may be used for publicity, catalog purposes and are necessary to jury the Capital Works Show. CD's will not be returned.

Digital images must be of professional quality in jpeg format, at least 300 dpi resolution at 4 x 6 inches (2100x1800 pixels). File names must include the artist's last name followed by the corresponding title, i.e. name0000.title000.jpeg (please abbreviate to a maximum of 8 characters for your name and 8 for the title).

For Entry #1 and Entry #2 list the title, date of completion, dimensions and a short list of materials, processes, techniques. For each entry include an informative statement, 75 words max, describing the subject/concept of entry, inspiration, etc. List materials, processes, and techniques separately. Include a .doc file with Your Name, Contact info: address, e-mail, and website.

- Handling. Indicate if work may be handled, with care, under supervision of BookWorks staff.
- Return / Pre-paid Postage. Re-usable or other Return Packing, return address label and pre-paid postage. Do not send cash or check for return shipment.

CHECK✓LIST

- ✓ Actual Work
- ✓ Entry Forms and Entry Fees
- ✓ Labeled CD of images and descriptive info for each entry



LIABILITY AND RESPONSIBILITY

Asheville BookWorks will take every precaution in handling artwork. BookWorks carries no insurance for artwork submitted for BookOpolis, while on display or in transit. Submission of work and signature on the entry form constitutes an agreement on the part of the artist to conditions set forth in this prospectus. The acceptance of an entry in the exhibition further includes permission to be included in photograph work and / or use images for publicity and educational purposes.

SALES

A commission 40% will be retained by BookWorks on sales of work. A sales price or NFS (not-for-sale) must be indicated for each entry. Artists who have sold work will be issued a check within 4 weeks.

DELIVERY OF WORK

Works must arrive at BookWorks via mail or hand delivery (noon – 4 PM) between Monday, August 29 and Friday, September 2, 2011. Work delivered late will not be included in BookOpolis. Artists are responsible for shipping costs, including insurance, with the carrier of their choice to and from Asheville BookWorks. Please be sure that the carrier will pick up at BookWorks. All work must be shipped in a reusable carton or include return packing, with a return shipping label and correct pre-paid postage included.

RETURN OF WORK

Packing materials will be retained by BookWorks for return shipping. BookWorks will not be responsible for damage due to incorrect packing materials or insufficient container when shipping artwork as it was originally shipped.

- Hand delivered work not picked up by scheduled dates, become the property of BookWorks and may be disposed at our discretion.
- Work without sufficient postage may not be returned. Entries without sufficient return postage will be processed for return after the cost of shipping AND a \$50.00 handling fee are paid to BookWorks.

CALENDAR

Entries Due at BookWorks	Week of August 29 – September 2, 2011
Jurying for the Capital Works Show	September 3 and 4
Notification of Work in Capital Works Show	Week of September 5 – 9
BookOpolis Weekend /All Entries on Display	September 23 and 24, 2011



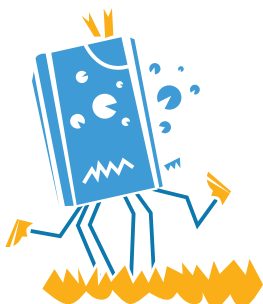
FRIDAY SEPTEMBER 23, 6 – 9 PM

OPENING RECEPTION AND ANNOUNCEMENT OF AWARDS

PARTY TIME!

SATURDAY, SEPTEMBER, 24 1- 5 PM

OPEN HOUSE, BOOKMAKING DEMOS AND PRINTMAKING DEMOS



Capital Works Show	September 23 – November 28, 2011
Pick-up & Return of Work	Week of September 26 - 30
Pick-up & Return of Capital Works Show	Week of November 28 – December 2